



29" 210W LED Lightbar - Driving Beam

#QVWL210D

www.qvee.com.au



DESCRIPTION

The QVEE 210W high powered LED light bar has 21 x 10W Osram® LED's with refraction styled reflectors and optics, putting out a massive 19,320 Lumens.

Heavy duty aluminium housing with a heatsink construction for heat dispersion and virtually unbreakable polycarbonate lens. Water and dust proof up to IP67.

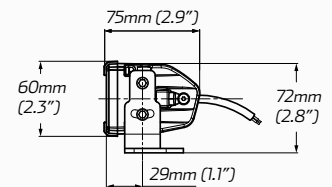
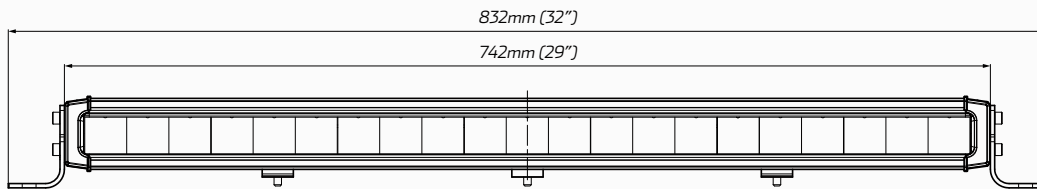
Shock and vibration resistant.

ACCESSORIES

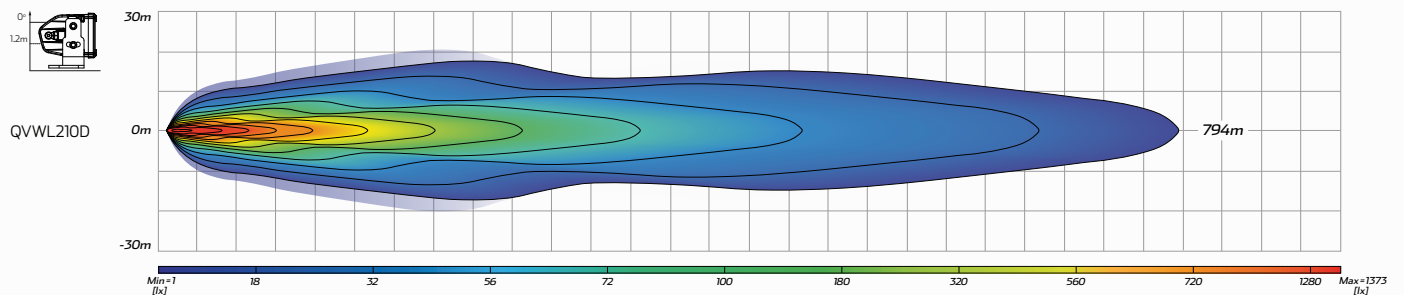
- Channel Mounting Brackets
- Side Leg Mounting Brackets



DRIVING



BEAM COVERAGE



TECHNICAL SPECIFICATIONS

Voltage	• 10 - 48 Volt
Wattage	• 210 Watt
IP Rating	• IP67 rated
Raw Lumens	• 19,320 lumens
Effective Lumens	• 11,700 lumens
LED Count	• 21 x 10W High powered Osram® LED's

Colour Temperature	• 5700 K
Lens Material	• Refractive Polycarbonate Lens
Beam Coverage	• Driving Beam
Dimensions (with Legs)	• 32" L x 2.8" H x 2.9"D • 832mm L x 72mm H x 75mm D
Accessories	• DT Connector • Channel Mounting Brackets • Side Leg Mounting Brackets