

## Square Toyota Style UHF Insert

#QVSWPLUHFBL

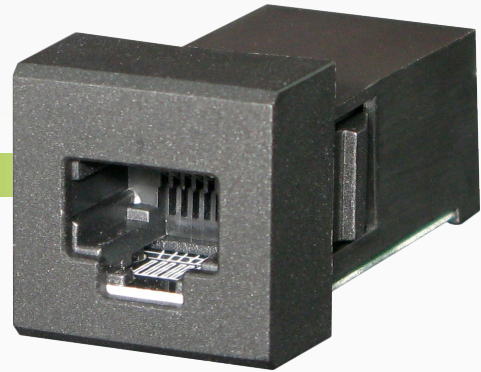
www.qvee.com.au

### DESCRIPTION

The QVSWPLUHF UHF inserts are designed as a direct replacement for the latest 200 Series Landcruiser & Prado.

RJ45 rear connector (not included). Easy to install.

Great look for any fit out.

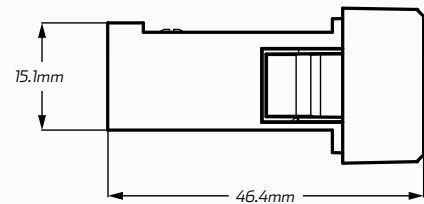


### TECHNICAL SPECIFICATIONS

UHF Socket	<ul style="list-style-type: none"> <li>• RJ45 Connectors (not included)</li> </ul>
Voltage Input	<ul style="list-style-type: none"> <li>• 12V Input</li> </ul>
Amperage Rating	<ul style="list-style-type: none"> <li>• 3 A</li> </ul>
LED Current Draw	<ul style="list-style-type: none"> <li>• Less than 0.25 W</li> </ul>
LED Colour	<ul style="list-style-type: none"> <li>• No illumination</li> </ul>
Applications	<ul style="list-style-type: none"> <li>• 4WD's, RV's, ATV's, Cars</li> <li>• Trucks, Agricultural Machinery</li> <li>• Earthmoving Equipment.</li> </ul>

### DIMENSIONS

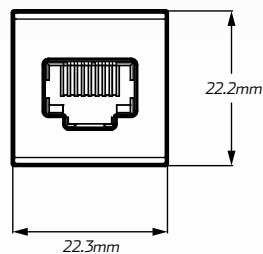
#### SIDE



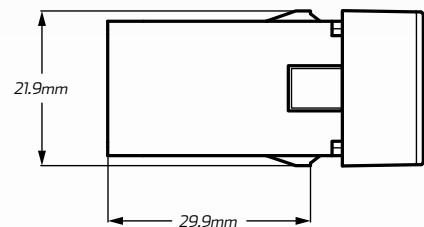
### MODEL

1	<ul style="list-style-type: none"> <li>• 2018 - Current 200 Series Landcruiser</li> </ul>
2	<ul style="list-style-type: none"> <li>• 2018 - Current Prado</li> </ul>

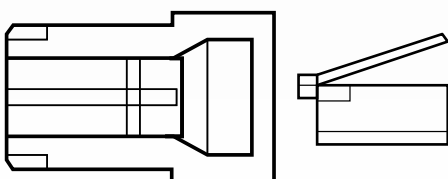
#### FRONT



#### TOP



### WIRING HARNESS



RJ45 Connector  
(Not included)