



29" 210W LED Lightbar - Driving Beam

#QVWL210D

www.qvee.com.au



DESCRIPTION

The QVEE 210W high powered LED lightbar has 21 x 10W Osram® LED's with refractive lens, minimising loss of light & putting out a massive 19,320lm.

Heavy duty aluminium housing with a unique heatsink construction for heat dispersion and virtually unbreakable polycarbonate lens.

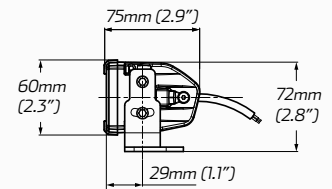
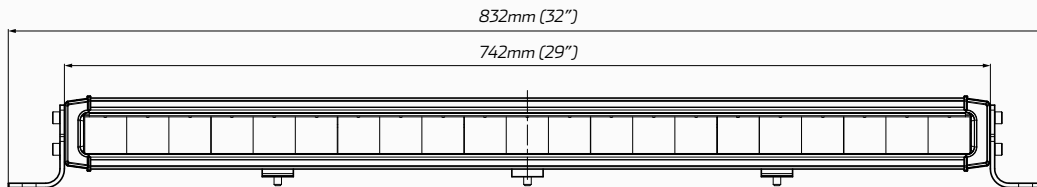
Comes supplied with side leg & channel mounts.

ACCESSORIES

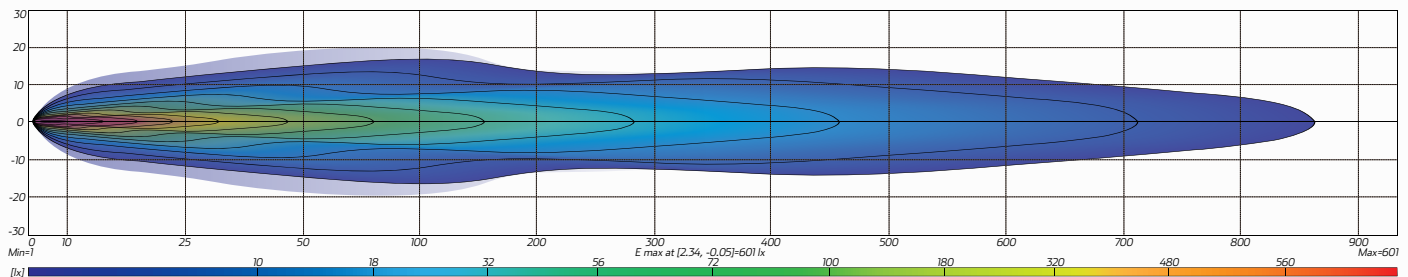
- Channel Mounting Brackets
- Side Leg Mounting Brackets



DRIVING



BEAM COVERAGE



TECHNICAL SPECIFICATIONS

Voltage	• 10 - 48 Volt
Wattage	• 210 Watt
IP Rating	• IP67 rated
Raw Lumens	• 19,320 lumens
Effective Lumens	• 11,700 lumens
LED Count	• 21 x 10W High powered Osram® LED's

Colour Temperature	• 5700 K
Lens Material	• Refractive Polycarbonate Lens
Beam Coverage	• Driving Beam
Dimensions (with Legs)	• 32" L x 2.8" H x 2.9"D • 832mm L x 72mm H x 75mm D
Accessories	• DT Connector • Channel Mounting Brackets • Side Leg Mounting Brackets